

RIVER LANDING

CLERK'S RECORDING CERTIFICATE

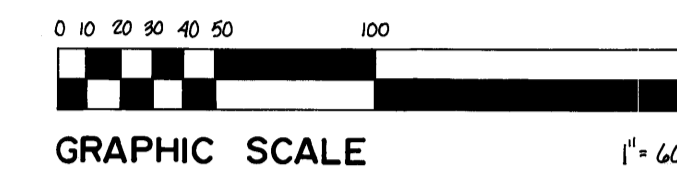
I, LOUISE V. ISAACS, CLERK OF THE CIRCUIT COURT OF MARTIN COUNTY, FLORIDA, HEREBY CERTIFY THAT THIS PLAT WAS FILED FOR RECORD IN PLAT BOOK 10, PAGE 25, MARTIN COUNTY, FLORIDA, PUBLIC RECORDS, THIS DAY OF , 198 .

LOUISE V. ISAACS, CLERK
CIRCUIT COURT
MARTIN COUNTY, FLORIDA

FILE NO. _____

BY: _____
DEPUTY CLERK

SHEET 3 OF 5

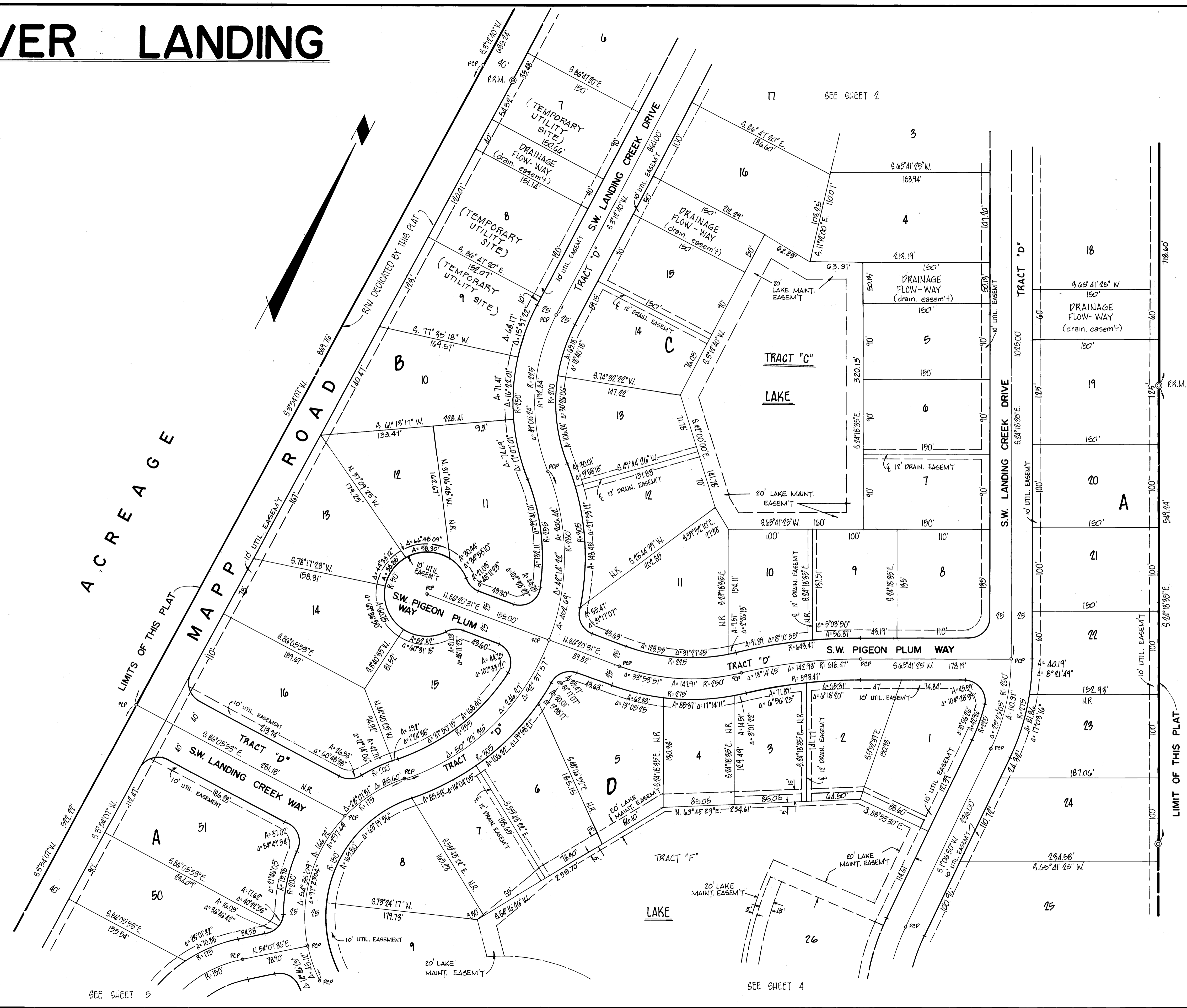


LEGEND

- ⊙ DENOTES (P.C.P.) PERMANENT CONTROL POINT
- ⊙ DENOTES (P.R.M.) PERMANENT REFERENCE MONUMENT
- N.R. INDICATES NON-RADIAL

NOTES

- (1) ALL RADII 25' UNLESS OTHERWISE NOTED.
- (2) BEARINGS AS SHOWN HERE ON ARE REFERENCED TO THE EAST LINE OF THE WEST 251 ACRES OF SAID LOT 8 BEARING S. 24° 18' 35" E. AS SHOWN ON THE PLAT OF FOUR RIVERS (S-6).
- (3) DIMENSIONS AT BLOCK CORNERS ARE TO PROPERTY LINES EXTENDED EXCEPT WHERE OTHERWISE NOTED.



FOUR RIVERS P.B. 5, P. 6

DENI ASSOCIATES
4700 HIATUS RD., SUITE 351
BUNNRSSE, FL. 33321
(305) 749-0333

SEE SHEET 5

SEE SHEET 4

SEE SHEET 2